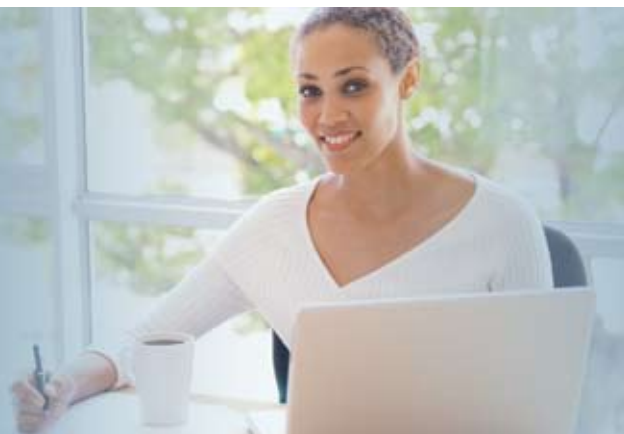


COMPLETE PAYROLL SOLUTIONS



Accuracy, timeliness and courtesy make up the foundation of AmCheck®



America's Way to Pay™

AMCHECK SERVICES

- Payroll Services
- ASO Services
- HR Solutions
- Employee Benefits
- Workers Compensation
- Time and Attendance
- **AmCheck**® OnLine Employer
- **AmCheck**® OnLine Employee Self Services

OTHER SERVICES & PRODUCTS

- Employee Hotline Service-Includes Posters
- Background, Credit, Employment Verification Services
- Payroll Visa™ Debit Cards
- COBRA Administration Services
- Section 125 Services
- **AmCheck**® 401K Easy Plans
- **AmCheck**® Resource Center
- Unemployment Management Services
- General Ledger Interface with Popular Accounting Software

WHAT WE DO:

- Prepare Payroll
- Issue Checks & Payroll Reports
- FICA, FIT & SIT Tax Withholdings
- Federal & State Tax Deposits, EFTPS
- Prepare & Submit Quarterly 941's State & SUTA Forms
- Year-End W-2's, W-3, 1099's & 940
- Local & City Deposits & Filing
- New Hire Reporting
- Job Cost Accounting Reports
- Customized Reports
- Federal Payroll Summaries
- Wage & Hour Law Compliance
- Paid Leave Programs
- Earned Income Credit
- Comprehensive Payroll Deductions
- Third Party Checks
- Payroll Check Reconciliation
- Vacation & Sick Time Accruals
- Department Summary Reports
- Multiple Worksite Reporting
- Multiple Payroll Input Options
- Checks Signed & Stuffed in Envelopes
- Payroll Delivery
- Direct Deposit
- Full Internet Payroll
- HR Communication Module
- Automated Check Signing
- Check Seal or Insertion Option
- Pre-Employment Screening
- Pension Reporting
- ...And Much More

HERE'S WHAT AMCHECK CLIENTS LIKE THE MOST!

TECHNOLOGY

AmCheck has the latest technology for inputting and administering payroll. You can have your payroll back in as little as 15 minutes from process.

DEDICATION

You get the same dedicated customer service representative for your account each time you call.

CONTROL

You have 24/7 online access that enables you to hire or terminate employees, along with the ability to change all employment information.

KNOWLEDGE

With all of your information at your fingertips and the ability to pre-calculate and pre-process your payroll before you submit it, you know your payroll will be accurate each and every time.

TIMELINESS

Our couriers will deliver payroll on-time every-time, or print the checks and reports on your printers.

ASSISTANCE

Between our professional payroll staff and staff of Human Resource professionals we can assist with all your employer and employee needs.

LIABILITY

AmCheck keeps you in compliance, one payroll at a time. Our nationwide tax paying and filing capabilities mean that your taxes are paid promptly and accurately.

COVERAGE

AmCheck offers nationwide services handling payroll in all 50 states.

ASSURANCE

We're so confident of our capabilities that AmCheck will insulate you from any penalties that are a result of our error. That's peace of mind.

AMERICA'S WAY TO PAY!